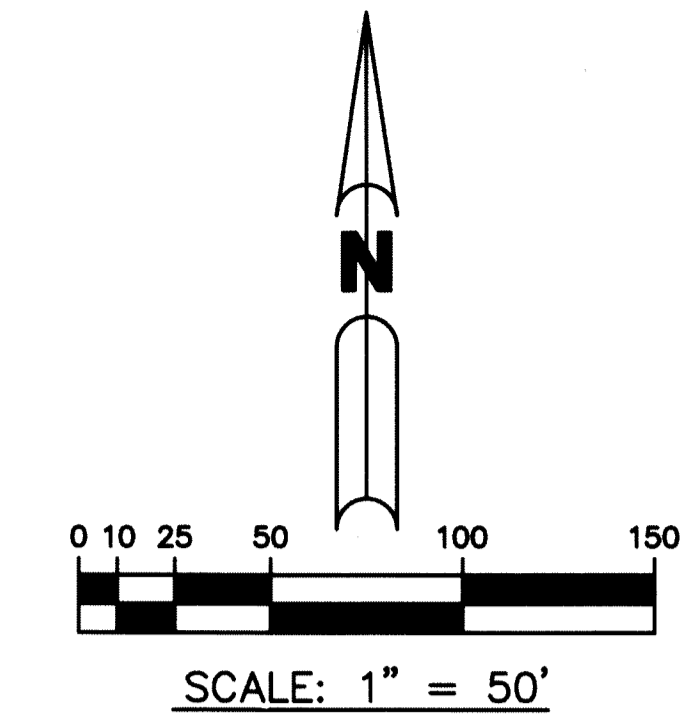


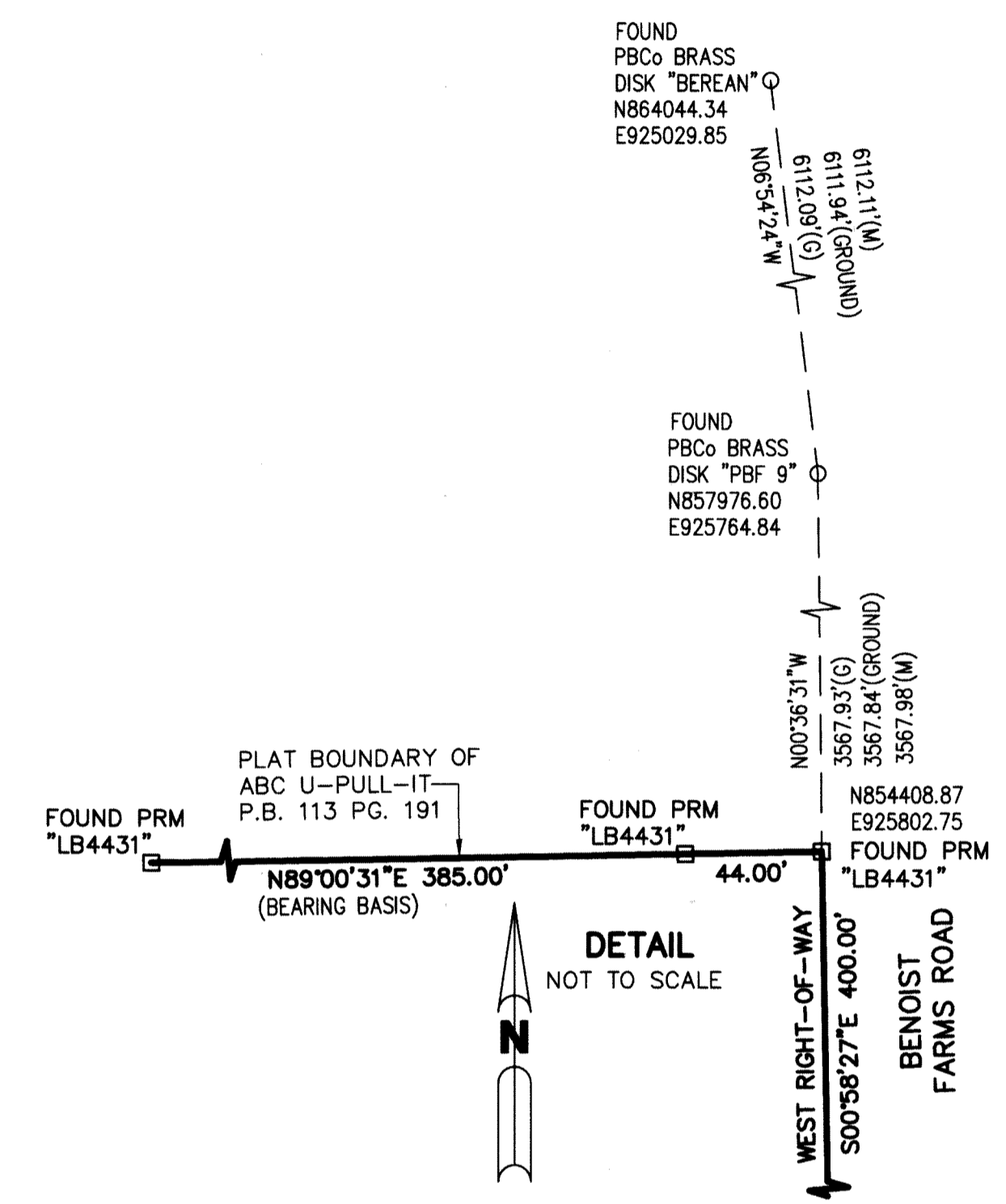
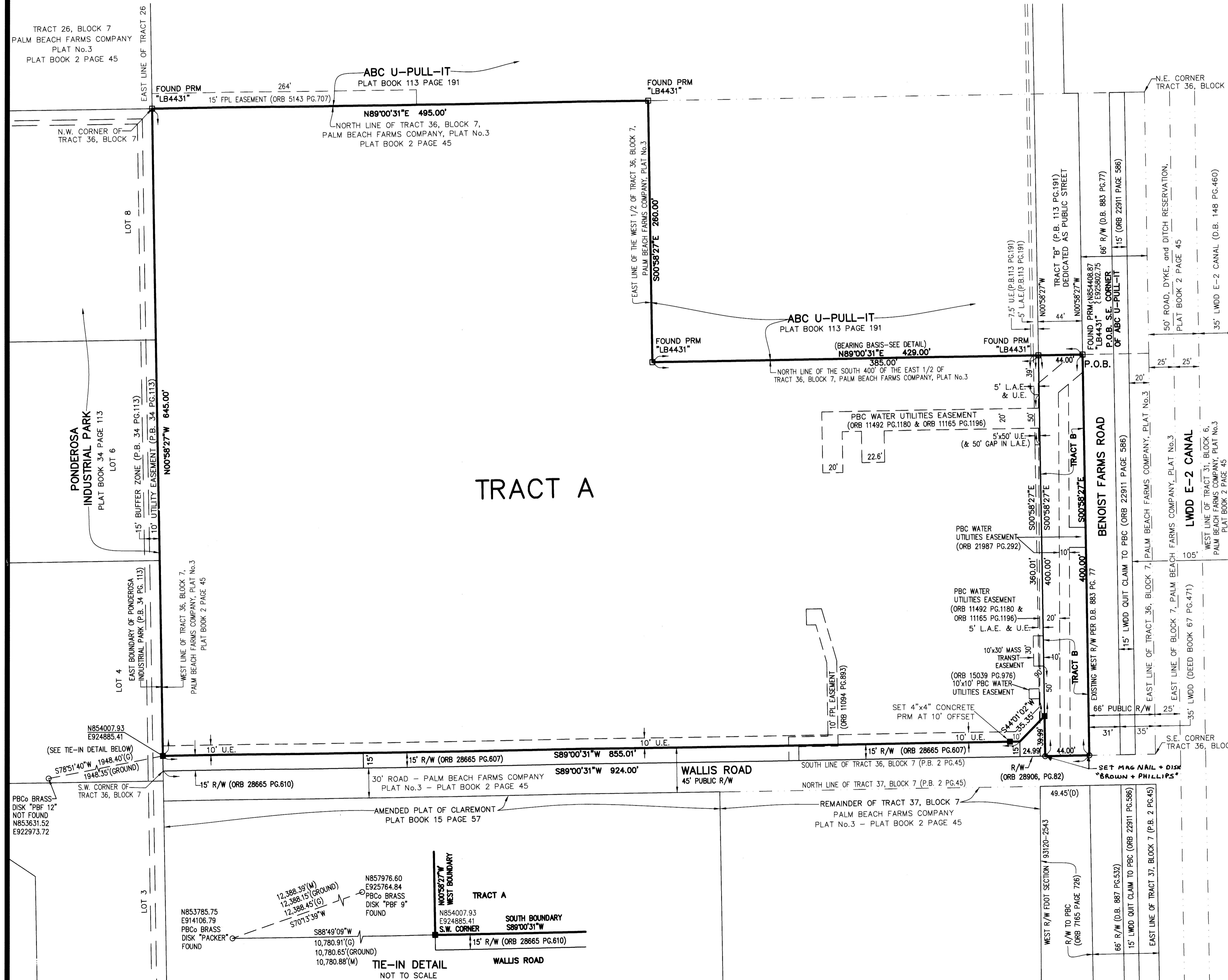
# KENDALL INDUSTRIAL

A PARCEL OF LAND LYING IN SECTION 32, TOWNSHIP 43 SOUTH, RANGE 42 EAST, PALM BEACH COUNTY, FLORIDA, BEING A REPLAT OF A PORTION OF TRACT 36, BLOCK 7, PALM BEACH FARMS COMPANY PLAT No.3, RECORDED IN PLAT BOOK 2, PAGE 45 OF THE PUBLIC RECORDS OF PALM BEACH COUNTY, FLORIDA.

SHEET 2 OF 2



# 16



PREPARING SURVEYOR & MAPPER'S STATEMENT:  
 THIS INSTRUMENT WAS PREPARED BY  
**JOHN E. PHILLIPS III, P.S.M. 4826**

**BROWN & PHILLIPS, INC.**  
 CERTIFICATE OF AUTHORIZATION # LB 6473  
 1860 OLD OKEECHOBEE RD., SUITE 509  
 WEST PALM BEACH, FLORIDA 33409  
 361-615-3988, 615-3991 FAX

JOB No. 16-044